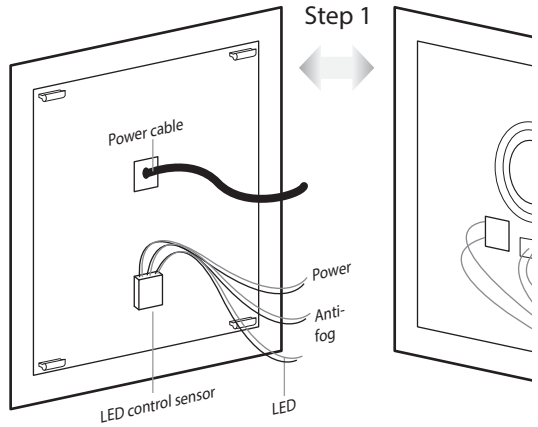


Replacing the LED touch sensor (For Repair only)

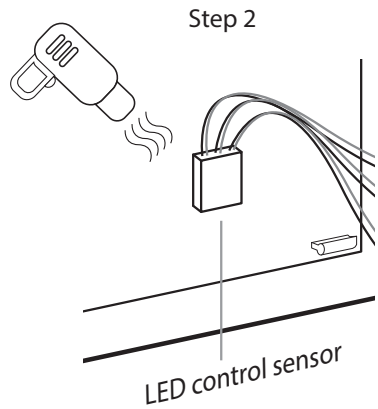
Step 1

Turn off the power.
Carefully remove the mirror apart from the back frame to review the LED touch sensor control on the back of the mirror.



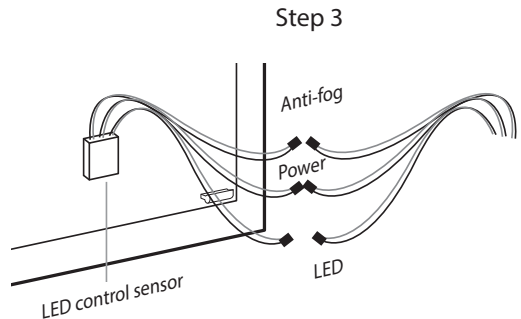
Step 2

Disconnect three connected wire (Black & Red cables). Gently remove the old LED touch sensor control from the mirror with a blow dryer (in low power) to warm up the glue on the back. Be carefully not to scrape the mirror surface or use anything to scrape the glue off.



Step 3

Remove the protective tape on the back of the new LED touch sensor. Replace it on the original position. Press firmly to secure.



Step 4

Connect three cables: LED cable, Power cable and cable accordingly to the silver tag.

Step 5

Put the mirror back to the back frame.